

# The Swedish Collection #0

## Opphämta

A beautiful patterned wall hanging, woven in a diamond opphämta pattern.

Size: 22" x 48"

Warp: 16/2 cotton, unbleached

Weft: 16/2 cotton, 476 red doubled, or choose your own color.

Weft tabby: 16/2 unbleached cotton

956 warp ends, 956 long eyed heddles, 12 in long, plus long pattern heddles for the drawloom.

Four ground shafts, 235 pattern units

Warp ends/inch: 40

Reed: 20 (10 dent not recommended)

Weaving width in the reed: 23 3/4"

Warp length: 2 3/4 yds

All threads and heddles are available from Glimakra USA.



Similar Smålandsväv from the Växjö Museum

This wall hanging can be woven without a drawloom by using half heddle sticks and a weaving sword. For the non-repeating pattern, thin metal rods can be put into the shed to save it for the weaving of the top half of the pattern. However, this pattern would take a lot of shed sticks to save the pattern. I recommend that this be woven on a drawloom using 10 pattern shafts. Long eyed heddles are threaded on four ground shafts. Complete instructions are found in the books, "Weaving with long eyed heddles" and "Drawloom Weaving, an introduction to warping and weaving on a drawloom" both by Joanne Hall.

### Smålandsväv exhibit at the Växjö Museum

Smålandsväv, or opphämta, like the one on the left, was commonly woven in Småland, in south central Sweden. The museum in Växjö, Småland, has many examples of this weave. There are other names for this weave, including Amerikatäcke (America coverlet). Many American immigrants from Sweden came from Småland.

### Smålandsväv's traditional patterns

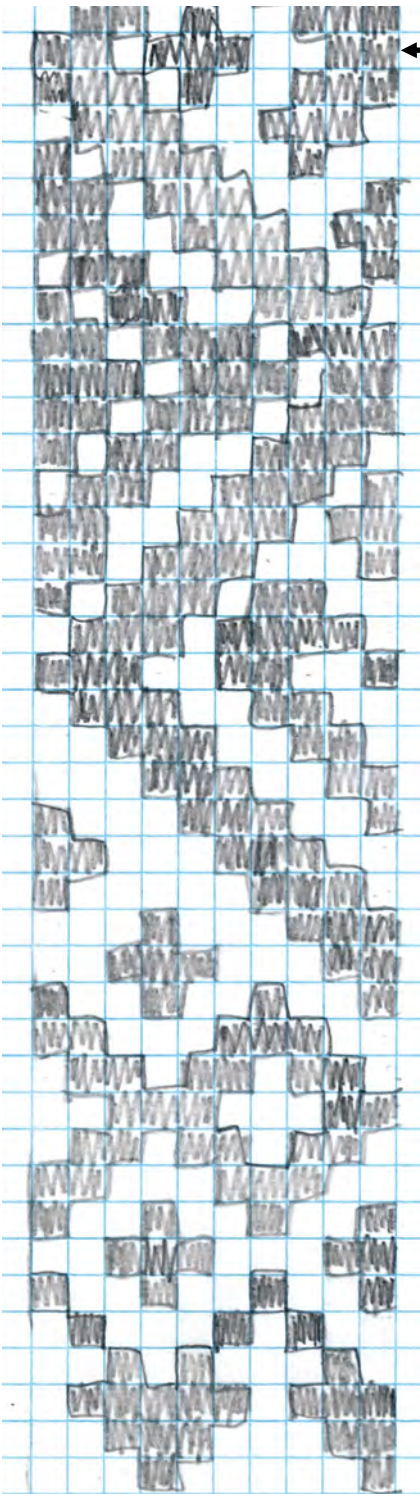
In the past, Smålandsväv was commonly woven with fine linen and later with cotton warp threads, sett from 25 to 50 ends per inch. These patterns usually consist of small diamonds, repeated to make larger blocks of pattern.

Transcription prepared by  
Joanne Hall

# Swedish Collection # 0

## Smålandsväv, brocade patterned wall hanging

The 4 ground shafts are threaded plain weave using long eyed heddles. These shafts can be tied up either counterbalance or countermarch. Tie up two treadles to weave plain weave. The repeated pattern sheds are saved by making half heddle sticks, which bring up the warp threads to create the pattern shed.



Center of the pattern

Follow the draft on the left for weaving this pattern on a drawloom.

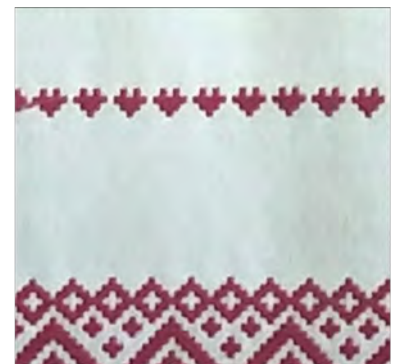
To weave this pattern with a sword, or batten, expand the draft for picking up the pattern to make the pattern sheds.

10 9 8 7 6 5 4 3 2 1

Begin here



The narrow stripes are woven in the heart pattern found at the bottom of the larger border pattern



Drafts and instructions prepared by Joanne Hall